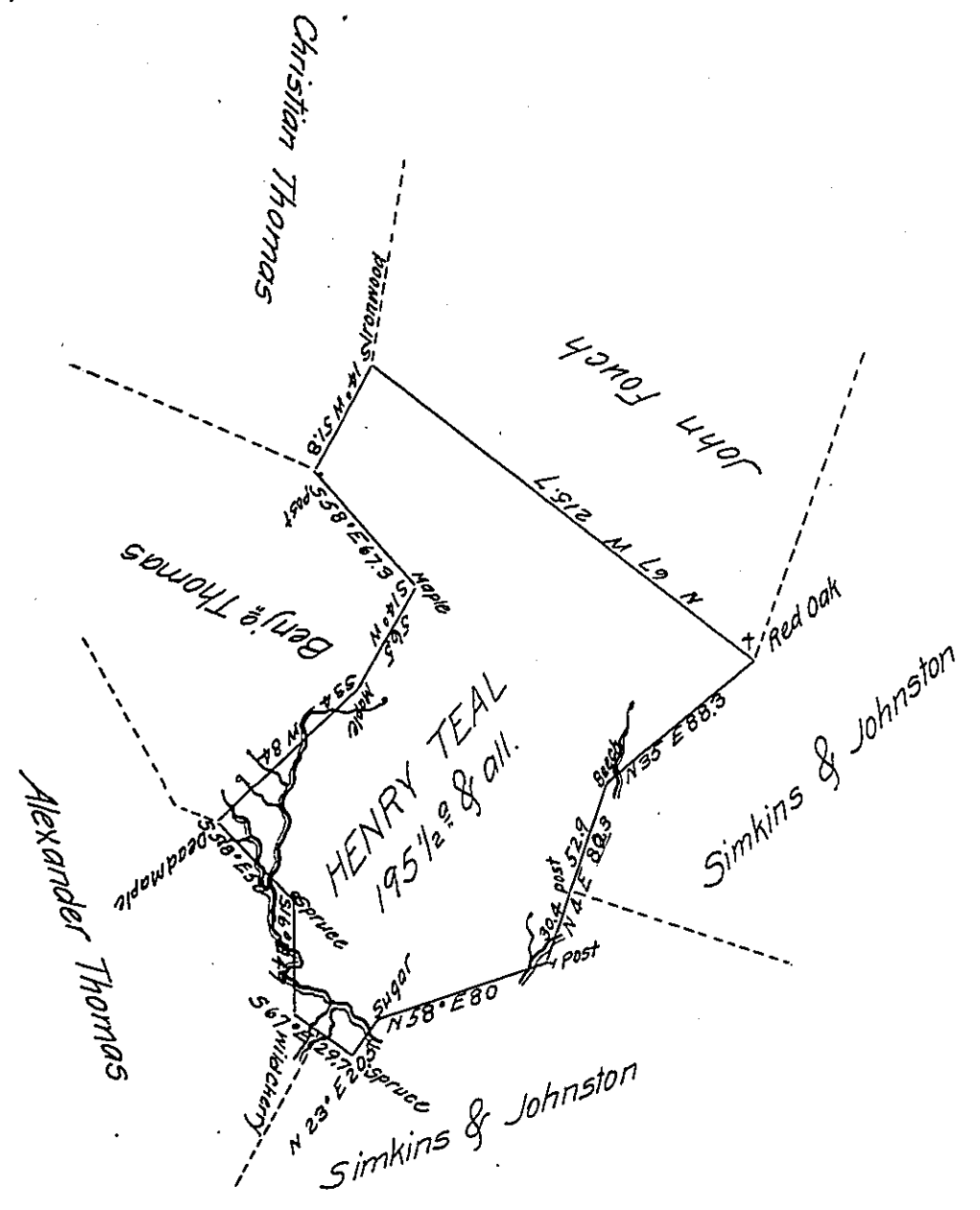


FORM No. 1.



Situate on Waters of Piney Run a branch of Castleman's River in Elk Lick Township, ^{Somerset County} & Surveyed the 28th day of January 1794 in pursuance of a Warrant dated the 12th day of March 1789 by Alexander McClean Esq. late Deputy Surveyor & Certified this 8th day of April 1805.

To Samuel Cochran Esq.
Surveyor General of Pennsylvania

P^r John McClean Deputy

IN TESTIMONY that the above is a copy of the original remaining on file in the Department of Internal Affairs of Pennsylvania, made conformably to an Act of Assembly approved the 16th day of February 1833, I have hereunto set my hand and caused the Seal of said Department to be affixed at Harrisburg, this twenty ninth day of April 1907

Loach P. Brown
Secretary of Internal Affairs.